

Country Club Estates Newsletter

May and June
2003



PRESIDENT'S CORNER---

COUNTRY CLUB ESTATES ASSOCIATION OFFICERS

President—
Mike Walsh

Vice President
Walt Hoefler

Secretary—
Marie Miller

Treasurer—
Jane Franklin

Director—
Janet Secor

Director—
Sharon Galbraith

Director—
Barbara Reedy

Newsletter Editor—
Shirley Wheeler

As you look through this month's newsletter you will see some of the results of the Board's Planning Session. You will find our mission statement which summarizes the role of the board, the vision statement which helps us to look toward the future and see what we believe our community can and will become. We also defined three goals that we could work toward in the short term to help move us toward the vision. As you read the goals think about what part you could play in the attainment of these goals and think about how a community effort focused on these goals could make this community an even better place to live and how reaching for the vision can add value to your home and your retirement years. The three goals that we have chosen are:

- 1) Establish a 5 year Growth Plan with the Developer,
- 2) Provide Improved Amenities,
- 3) Improve Community Outreach.

We have already begun to work on these goals but to make them a reality we need help. Many people have volunteered to be on committees, help around the clubhouse and get involved in social events. This help is greatly appreciated but there is still room for more volunteers. At present we are in real need of volunteers to be part of the Architecture Committee and the Community Affairs Committee and we need to have someone who would be willing to oversee yard maintenance and cleaning at the clubhouse.

I would also like to encourage you to come to board meetings to hear what we are doing and to give your input on matters that are of interest to you. We meet the first Thursday of each month at the clubhouse at 12:00 noon. Mike



If you would like to have a copy of the new reference book stop by the clubhouse or drop a note to Marie Miller at the association address 3209 Wedge Rd., or check for it on the website, www.zianet.com/cceha

CCEHA MISSION STATEMENT

Country Club Estates Homeowners Association provides value to homeowners by ensuring conformance to covenants, restrictions and bylaws; promoting neighborhood improvements, safety and social activities; and advocating on behalf of its members to the developer, municipality and other political entities.

HAPPY MOTHERS DAY

DAUGHTER—

- 1 year of breastfeeding Mix ingredients. Let stand
- 3 parenting books 18 to 21 years, opening bed-
- 5 1/2 bedtime stories room door occasionally.
- 17 educational toys Release. Hold breath.
- 4 reliable babysitters
- 2 important talks
- 18 years of education ***RESULTS MAY VARY**
- 377 rides home



COOKS CORNER—



A SIMPLE MOTHERS DAY BREAKFAST RECIPE—Here is a gift you **KNOW** she is going to love.

Using a cookie cutter or a knife, cut out a small heart shape from the center of a **THICK** slice of bread. Spread each side of bread with butter (or get creative with an herbed or garlic butter blend)

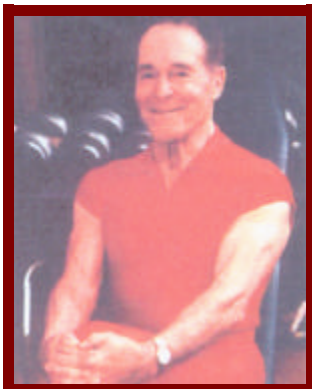
Heat skillet over medium heat. Sauté bread until golden, 2 or 3 min. Lower heat, and gently flip toast.

Break an egg into heart-shaped hole. Cover, and cook until egg white turns opaque, about 5 min.

Transfer to a plate along with the heart -shaped piece of cutout bread (toast), perfect for dipping into yolk.

Serve with a cup of hot cocoa, juice or coffee.

HEALTH—



If you remember when the first TV show hit the air, you are likely old enough to be a grandparent—and perhaps wishing you'd paid closer attention.

Long before there were personal trainers, before we'd ever heard of aerobics, there was Jack La Lanne.

For more than half a century, Jack La Lanne has been telling us to exercise and to eat right, promising us better and longer lives if we did so.

And what gives him the authority to say this? Well, for one thing, this American icon of muscle has now turned — are you ready? —88.

Schedule of Events

May 2003

Sun	Mon	Tue	Wed	Thu	Fri	Sat
				X1	2	X3
4	5	6	7	8	9	X10
11	X12	13	X14	15	16	X17
18	19	20	X21	22	23	X24
25	26	27	X28	29	30	X31

- May 1—Board Meeting—clubhouse NOON
- May 3 —Cards & Games 7:00pm—clubhouse
Coffee & Donuts 9:00am clubhouse
- May 10—Coffee & Donuts 9:00am—clubhouse
- May 12—Demo. Bocce game
10:00am south end of Bogie Ct.
- May 21—Ladies Day Out—10:45 am—clubhouse
- May 24—Coffee & Donuts 9:00am—clubhouse
- May 28—Readers Group—9:30am —clubhouse
- May 31—Coffee & Donuts 9:00 am

ACTIVITY COMMITTEE REPORT—EVE MEYER

Activities Scheduled Each Month —

Cards & Games—1st Sat. (May 3 rd, 7:00 pm

Sharing our Talents & Interests — 2nd Wed.—May 14, 2:00 pm

Readers Group — 4th or last Wed.—May 28 @ 9:30 am

Ladies Day Out –May 21, 10:45am at clubhouse Coffee @ Donuts—each Sat @ 9:00 am

COMING UP MONDAY MAY 12, 10:00 AM —South end of Bogie Ct. for a demonstration of our new BOCCE GAME. Bring a chair if you want to sit.

We are planning a 4th of July party ——MORE LATER

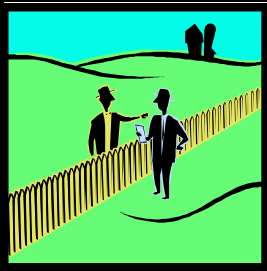
Recycling is a help to everyone, bring your crushed cans to the clubhouse or call any board member or activity member if you wish someone to pick up the cans.

Newspapers can also be recycled at the Deming Headlight. You may drop newspapers off at their office, 219 E. Maple, or if you need to have your papers picked up, call Joe Meyer 546-8073.

SECOND COMMUNITY GARAGE SALE WILL TAKE PLACE IN OCT. SAVE YOUR ITEMS FOR THIS FUN SALE.

The Activities Committee works hard to plan & carry out events and activities for all CCE residents to enjoy. We appreciate all comments & suggestions that can help us in this endeavor. Please call Eve @ 546-8073 or any activity member if you wish more information.

Thank you all for your generous contributions to our FOOD BASKET. Please bring items, non-perishable, to the clubhouse.



MEET YOUR NEIGHBOR——

Kate McKelvey/Earl Nelson, 2417 Play-thru Drive

Kate and Earl lived in Auke Bay, 10 miles outside Juneau, Alaska for 25 years before coming to visit friends at CCE and the sun and desert enchanted them.

They like to travel to sunny places with colorful flowers, read, needlepoint, embroidery and listen to Blues and Jazz.

Before retiring, they both worked on ships in Alaska —The Ferry System for 25 years.

Their favorite trips —Earl spent two months traveling down The Green River alone in a sport yak. Kate spent four months in Africa in the mid 80's. Favorite trip together was to South Africa.

They would like to see a Neighborhood Watch or some kind of security watch to prevent Burglary and vandalism. So many residents enjoy traveling and are not here all the time.

They would like to be involved in volunteering for social events and cultural events, fund raisers, walkathons, and hikes to see nearby attractions.

What an interesting life. If you haven't already, you will want to meet these people.

CCEHA VISION STATEMENT ——

CCE is a landmark retirement community known for its well defined southwestern style, being a great investment, and being a community where neighbors care.

Shirley Wheeler
2605 Water Hazard Dr.
Deming, NM 88030

TO——